



**DEEP STORAGE EXPERTS**

High Performance Backup  
and Archive in a Small Space

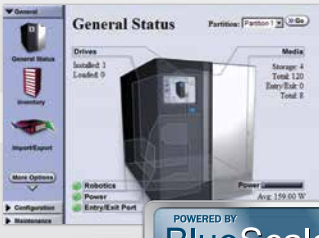
**T120**



Designed to meet the performance backup and archive requirements of the most demanding small and medium-sized businesses, the Spectra T120 library is easy to use, manage, and maintain. The T120 also integrates with Spectra's BlackPearl™ Deep Storage Gateway enabling users to easily store massive data forever at virtually no cost. The T120 scales from 30 up to 120 slots, providing a storage capacity of 750TB of compressed data with LTO-6 media. With the ability to install up to 10 half-height LTO-6 tape drives, the T120 offers compressed data transfer rates of up to 14.4 TB per hour. The T120 ensures the highest level of reliability with component redundancy and offers an exceptionally high-performance tape storage solution.

..... **SPECTRALOGIC.COM**

## Simplified Management



The common BlueScale® software interface for all Spectra libraries brings enterprise command and control features to the T120. Available through the library's LCD color touchscreen and remote web access, BlueScale is an easy-to-navigate, browser-based library interface that enables you to work simply, flexibly, and safely with your data.

BlueScale manages your library without any external servers, additional software license charges, or increased manpower. This feature-rich management tool provides a single interface to manage library configurations, partitions, encryption key management and library/media/tape drive health monitoring. BlueScale enhances your library operations by improving efficiency, manageability and availability.



**Encryption:** The Spectra T120 offers a range of solutions to meet your individualized encryption requirements. Spectra TKLM and BlueScale Encryption delivers tailored, customer-centric encryption key management solutions through very flexible design options. Available with every Spectra tape library, Spectra Encryption meets the needs across a broad variety of customers ranging from the very small business to the largest, most security conscious enterprise. Spectra's BlueScale Encryption utilizes AES-256 bit encryption through the library for LTO drives. It lets you seamlessly and affordably add encryption to your backup strategy, with no changes to backup policies and no additional hardware or software

## Flexible growth and increased performance that meets your changing needs

Adding capacity to your T120 is simple with Capacity on Demand (CoD). Start with as few as 30 slots, and as your business expands add more capacity in increments of 5 tape slots. Adding tape drives and increasing performance is simple with easy-to-configure slide-in drives. This scalability ensures library is upgradable with the latest in technological advances.

### End-to-End Buyer Protection



## Better Reliability Through Lifecycle Management



To ensure the viability of your data, Media Lifecycle Management (MLM) tracks and reports on health and security related statistics for Spectra Certified Media. Detailed reporting mitigates media problems and restore issues, allowing you to copy and move your data onto new tapes before degraded media affects your data.

Like MLM, Drive Lifecycle Management (DLM) extends the same proactive approach to drives by integrating tape drive analysis and reporting within the library. Using easy-to-manage, color-coded icons, you can quickly identify the health status of a drive. DLM also offers easy-to-use tape drive diagnostics to test and verify drive health and operation.

Managing the health of your library's critical components is made easy with Library Lifecycle Management (LLM). By monitoring utilization metrics relative to the expected useful life of library robotics, filters and other critical components; you are able to service your library before issues occur.

## Data Integrity Verification

To give you data integrity verification, Spectra offers a sophisticated suite of standard features that allow you to actively check data already written to tape. PreScan checks each imported tape and verifies that the tape can be written to, scanning the tape for potential issues including broken or dislodged leader and write-protected status. QuickScan scans a tape uni-directionally by reading the length of one track of the tape to provide a rapid indicator of integrity of data written. FullScan confirms that there are no media errors on the tape by reading the entire length of the tape up to the end of the recorded data. To ensure data validity, you can set triggers to check the health of tapes over an interval of time or verify a specific tape's data integrity on request. This process allows for rapid spot-checks of data integrity.



## Certified Media: All Tape Media is Not Created Equal .....

Spectra Certified Media is ready to use when you receive it: pre-labeled, pre-loaded in TeraPacks, and covered by Spectra's Lifetime Media Guarantee. Certified Media provides a wide range of media options: bulk or individual cartridges, cleaning cartridges, and custom and standard barcode labels. Spectra's unique CarbideClean® process is an added feature of Certified Media to ensure that any debris left on the tape surface from the manufacturing process is removed.

The Spectra T120 utilizes a custom, 8-tape TeraPack® media container. The TeraPack container provides a more efficient way to import tape media into the library and offers a clean, secure and stackable case for staging and storing media outside of the library.



## T120 Product Specifications .....

### Physical Characteristics

- Supports up to ten half-height LTO drives
- Fits into 14U rack space
- 24.5" H x 17.5" W x 37.5" D (with LTO drive)
- 62.2cm H x 44.5cm W x 95.3cm D
- Weight (approximate): 305 lb / 138.4 kg maximum
- Fully Loaded with 10 drives and 120 tapes.

### Interface Options

- SAS 6 Gb/s
- Fibre Channel – 4 Gb/s and 8 Gb/s

### Reliability Statistics

- Mean Cycles Between Failures (MCBF): Over 1 million
- Mean Time Between Failures (MTBF): 250,000 power-on hours
- Mean Time to Repair (MTTR): 3 minutes for hot swap components, 30 minutes average for non-hot swap components

| Capacity and Throughput |            |                |                   |                          |
|-------------------------|------------|----------------|-------------------|--------------------------|
| Media                   | Max Drives | Max Cartridges | Max Capacity      | Max Throughput           |
| LTO-6                   | 10         | 120            | 300 TB<br>750 TB+ | 5.8 TB/hr<br>14.4 TB/hr+ |
| LTO-5                   | 10         | 120            | 180 TB<br>360 TB* | 5.1 TB/hr<br>10.1 TB/hr* |

\*LTO-5 values calculated using 2:1 compression. †LTO-6 values calculated using 2.5:1 compression.

### Power Requirements

- 9.4 Amps @ 120 VAC (maximum configuration) 50/60 Hz
- Frequency 50/60 Hz

# Announcing Spectra's Black Pearl



## Spectra's Deep Storage Solution: An S3 Gateway to Object Storage On Tape For Limitless Storage Capacity

To meet the demands of extreme data growth and long-term retention, the Spectra BlackPearl™ Deep Storage Gateway enables users to easily store massive data forever at virtually no cost. Designed for organizations where data is a significant part of their operations, BlackPearl allows data to move seamlessly into mass tape storage in a way not previously possible. BlackPearl enables users to deploy a tier of deep storage that is cost effective, easy to manage and scalable to Exabytes of data. With BlackPearl's simple RESTful DS3 interface and embedded tape management software, organizations will confidently store all of their data forever at costs as low as pennies per Gigabyte.

### Data Moving to Spectra Deep Storage



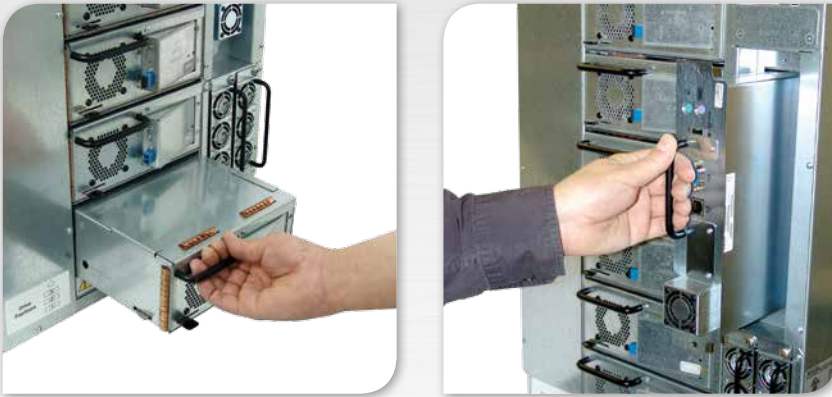
## SpectraGuard Support

Support for Spectra T120 ranges from our standard worldwide next business day replacement to more advanced alternatives, including same day, four-hour onsite service or our exclusive Assisted Self-Maintenance option.

Our expertise comes from over 30 years of solving real problems with hands-on lab work and on-site technical support. Our support staff is cross-trained in the entire storage environment—not just hardware—so we can assist you with all aspects of a problem. From open to close, we are committed to resolving all your issues.

**SPECTRAGUARD**  
Worldwide Support

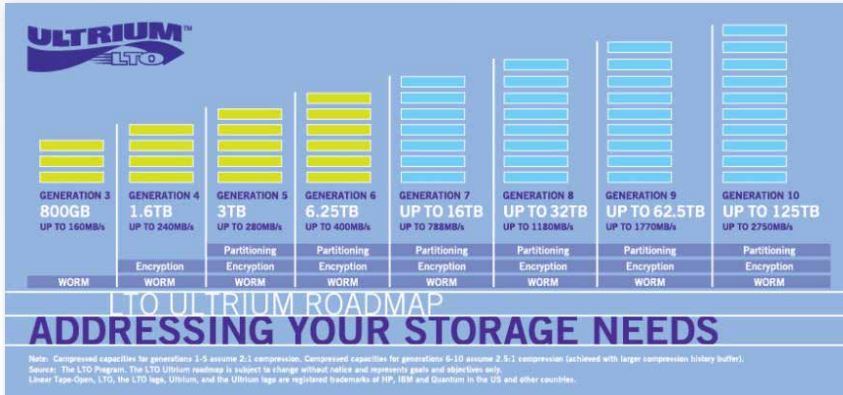
## Assisted Self-Maintenance (ASM)



Our Assisted Self-Maintenance feature enables you to replace select parts yourself.

When a component does need replacement, Spectra gives you the option to do it yourself—without onsite support. ASM is an industry-first support option designed for environments where normal support services are available but not always feasible for specific customers (e.g. high-security facilities, mobile sites such as ships). ASM parts are stocked at your site, giving you the ability to make immediate repairs and eliminate the waiting periods associated with parts availability and onsite service calls.

## LTO Technology



LTO (Linear Tape-Open) Ultrium Technology is optimized for high capacity and performance with exceptional reliability in either a stand-alone or an automated environment. It uses a single reel cartridge to maximize capacity. Ideally suited for backup, restore, and archive applications, the LTO tape format establishes a new benchmark for large volume backup and archive. LTO technology will meet the needs of small to large enterprise operations with a roadmap and migration path that extends well into the next decade.

## About Spectra Logic Corporation

Spectra Logic develops deep storage solutions that solve the problem of long term storage for business and technology professionals dealing with exponential data growth. Dedicated solely to storage innovation for more than 35 years, Spectra Logic's uncompromising product and customer focus is proven by the largest information users in multiple vertical markets globally. Spectra enables affordable, multi-decade data storage and access by creating new methods of managing information in all forms of deep storage — including archive, backup, cold storage, cloud and private cloud.

EnergyAudit, Spectra, BlueScale, SpectraGuard, SpectraLogic, TeraPack, TranScale and the Spectra Logic logo are registered trademarks of Spectra Logic Corporation. All other trademarks and registered trademarks are the property of their respective owners. Specifications subject to change without notice.  
© 2015 Spectra Logic. All rights reserved worldwide.

